

A presentation by Gray Guardians
GO Connect conference

How to develop your **Integrated Electronic Security System?**



Who we are

Control Risks is a specialist risk consultancy. We assist to our clients to build organisations that are **secure, compliant** and **resilient** in an age of ever-changing risk and connectivity.

Security Risk Management

- Security Consulting
- Security and Intelligence Programmes
- Risk Monitoring
- Security Design Engineering
- Workplace Violence Prevention and Threat Management

Operational and Protective Security

- Protective Services
- Secure Journey
- High Risk Managed Services

Organisational Resilience

- Crisis Readiness, Response and Recovery
- Business Continuity Management
- Risk Assessments

Crisis Response

- Kidnap, Extortion and Threat Response

Our People

Our team is committed to quality, integrity, technical excellence, exceptional service and a broad understanding of security needs and using international standards recognized across the world. Each member of the team is duly qualified, certified and highly-skilled in the various disciplines in which serve. With over 20 years experience in the security industry and expertise across Universities in the country.



JUSTIN KETTLE
Managing Director



ERROL GOLDSTONE
Head Security Advisory
Specialist



AZIZ NDARA
Security Consultant



What are **we facing?**





Types of **Security Issues**

Protest (Fees Must Fall)

Theft

Rape

GBV

Illegal Occupation

Drug and Alcohol Abuse



Our **Response**





The **Core Issues**

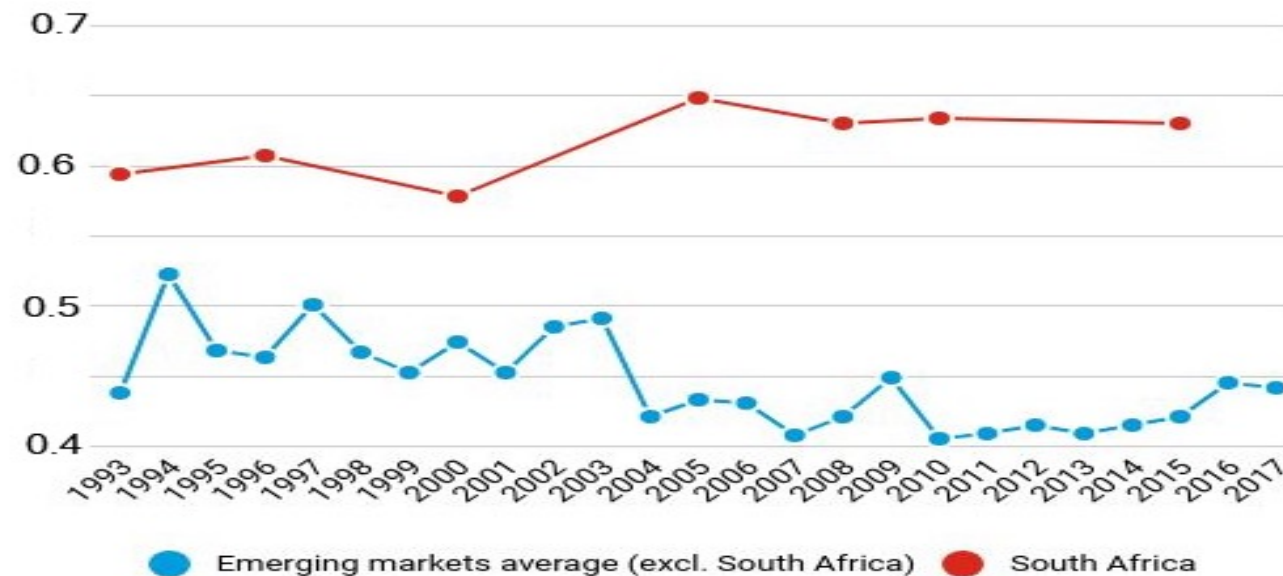
What has lead to **Security Issues**



What has lead to **Security Issues**

Increasingly unequal South Africa
Income inequality in South Africa has remained high and decoupled from the average for emerging markets.

(index scaled, 0-1)



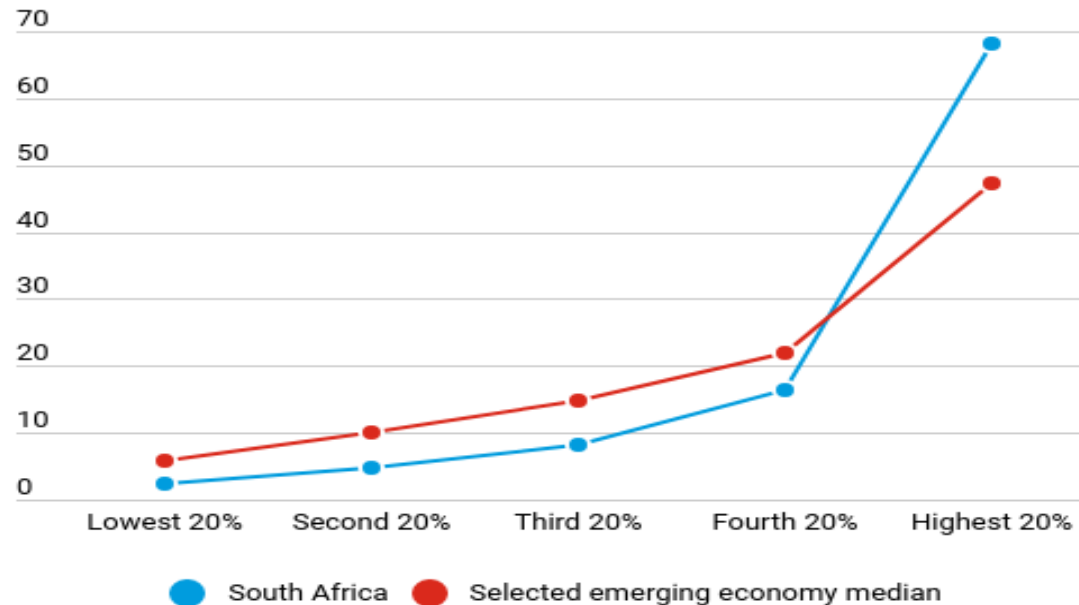
Source: World Development Indicators.

What has lead to **Security Issues**

Concentrated wealth

South Africa's income distribution is skewed towards the richest 20 percent.

(income held by income group, 2017, or earlier, percent)



Source: World Bank Poverty and Equity Database.

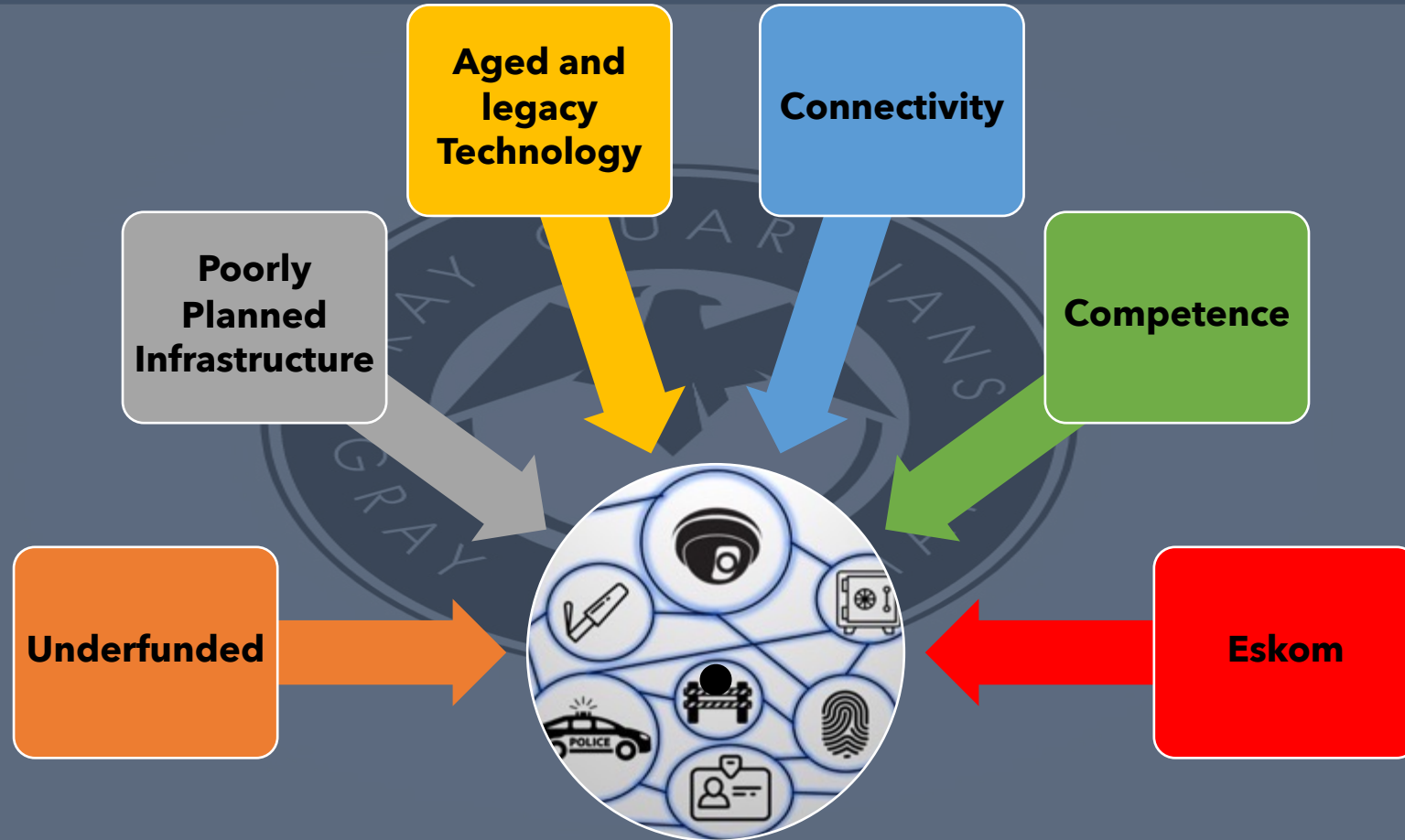
We need a **different conversation**





Current State of **Our Infrastructure**

State of our Infrastructure

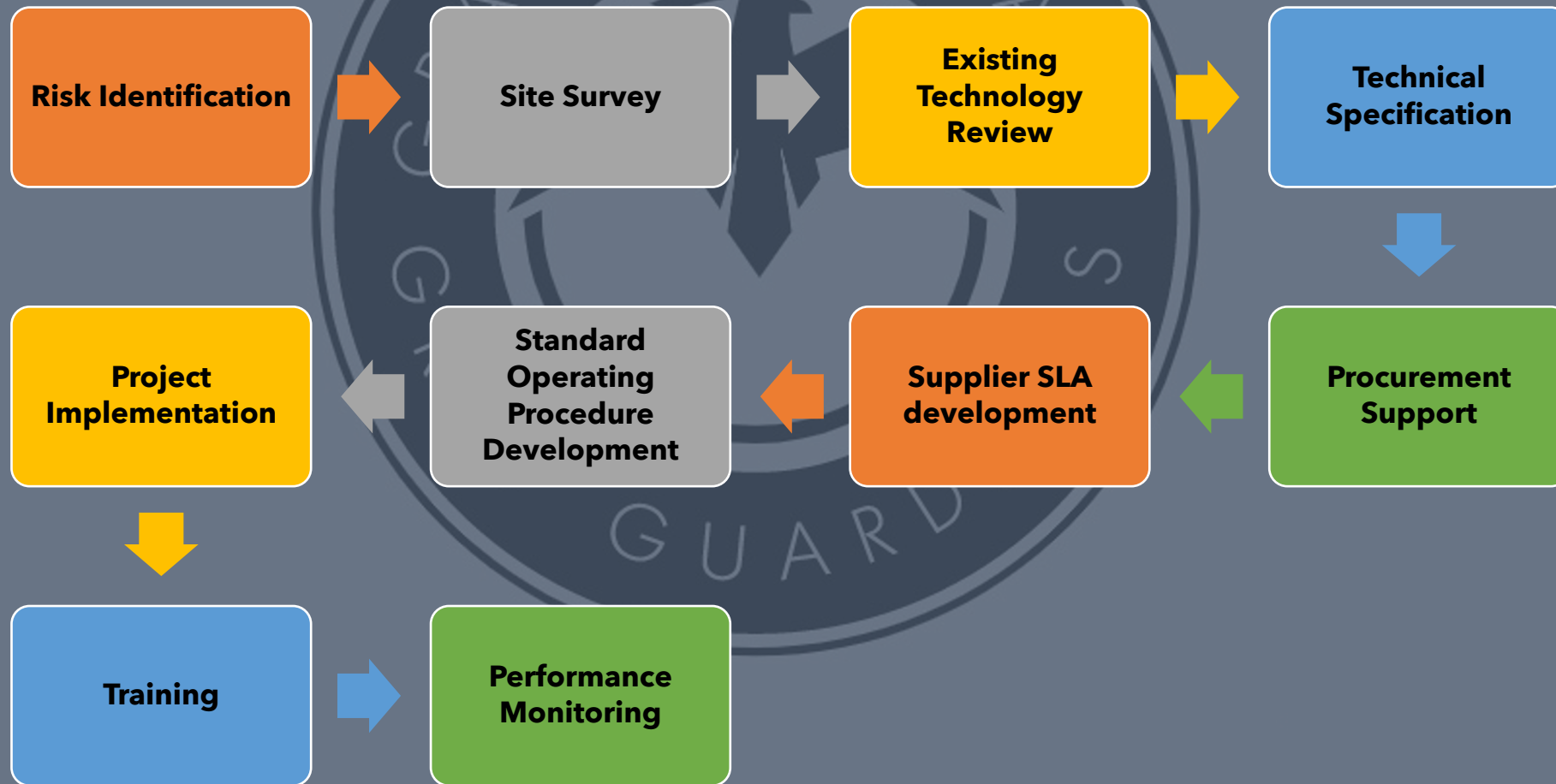




Our **Approach**

Our partnership with PURCO SA

Over the past two years we have worked on various assignments with PURCO SA across universities and TVET's. Our typical project rollout includes:



What is an **IESS** Strategy



Integrated Strategy

The Integrated Electronic Security System strategy should be built to ensure that the university has a world class security system which will take the university into the fourth industrial revolution with a key focus to identify and address the unique threats faced by the institution.

The primary objective of this is to assist in:

- Protecting students and employees;
- Protecting campus facilities;
- Providing easy access management for authorized visitors;
- Protection of assets

Infrastructure



Data



People

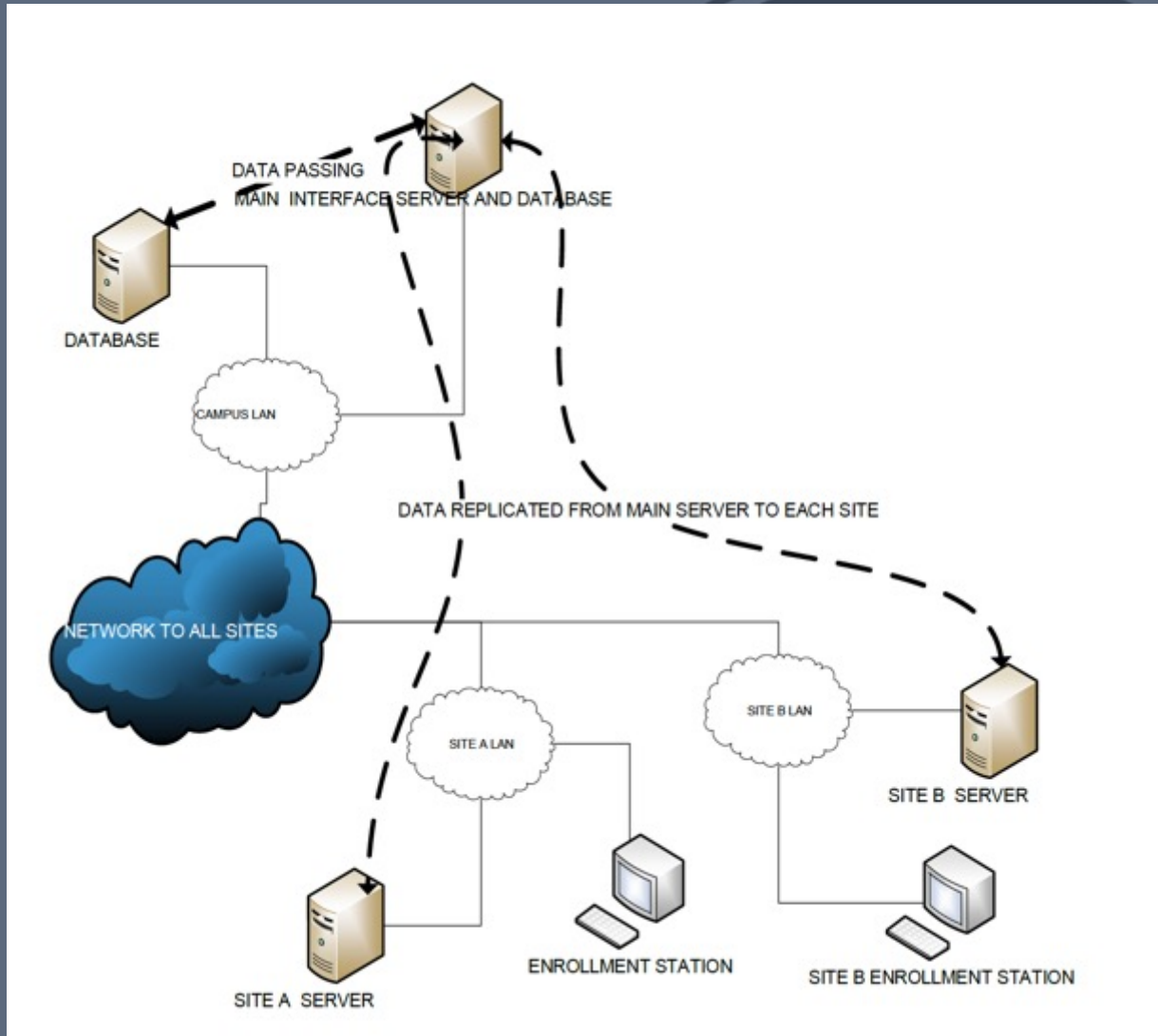
Deciding on **a technology** - Understand your environment



It is important to understand your landscape:

1. Ensure you have all your building plans
2. A complete view of your cadastre
3. Understand logistical routes (onsite and off site residence)

Deciding on a technology - Understand IT Architecture and existing infrastructure



What to Understand

- Network Equipment;
- Data Speed;
- Server size and capacity;
- UPS
- Switches

Deciding on a technology - Site Survey

Survey Checklist		
Checklist Date:		Responsible:
Reference No:		Supervisor:
External Reference No:		Site:
Observations	Answer	Remarks
PERIMETER PROTECTION		
1 Is the perimeter protection in a good condition?	NO	
2 Is there additional perimeter protection in place? (If yes, state in comment column)	NO	
3 Is the perimeter protection a good height? (State height in comment column)	NO	
4 Is the perimeter protection of good strength?	NO	
5 Is the perimeter adequately illuminated in the evenings?	NO	
6 Are the premises protected by razor wire?	YES	poor condition
7 Are there any visible vulnerable areas?	YES	
8 Is the fence clear of obstructions?	NO	
9 Are there trees and shrubs close to or against the fence?	YES	
GATES		
1 Is there an adequate amount of vehicle gates? (State how many in comments column)	YES	
2 Are the gates locked when not in use?	NO	24 HOUR SECURITY SERVICE
3 Are there pedestrian gates? (State how many in the comments column)	YES	
4 Are the gates in a good working condition?	YES	
6 Are there booms or chains being used?	YES	
ACCESS CONTROL		
1 Is there access control at each of the gates?	YES	
2 Is access documented?	YES	
3 Are visitors allowed access unescorted?	YES	
4 Are bags / parcels / packages / cars searched upon arrival?	NO	
5 Are visitors confirmed by telephone?	YES	
6 Are firearms permitted on the site?	NO	NOBODY CHECKS, WE WERE ON CAMPUS WITH FIREARMS
7 Is there a firearm safe?	NO	
8 Is there firearm documentation?	NO	
10 Are staff cars permitted on site?	YES	
11 Are staff members searched when exiting the premises?	NO	
12 Is there a search room / area available?	NO	
13 Are there vehicle stickers in operation?	NO	
14 Is there a time clock for staff members?	NO	
15 Must ID be shown upon arrival?	YES	
16 Do staff members have ID documents?	YES	
17 Are entry permits issued?	NO	

Deciding on a **technology** - Core System



Core base system which allows management to:

1. Aggregate all technologies into one system
2. Understand various patterns Prevent entry to unwanted individuals
3. Identify weaknesses and trends for criminal activity
4. Activate defence mechanisms through a touch of a button

Key Features

Data allows for the use of artificial technology which can assist with identifying risks which will create action.

Deciding on a technology - Booms, turnstiles and fencing



Fencing:

Fencing represents the first line of defence into your environment

Boomgates:

Preventative measure to manage vehicle traffic



Turnstile:

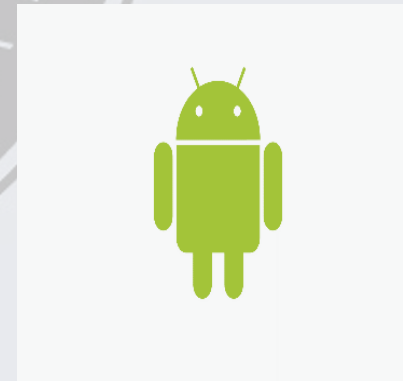
Preventative to manage foot traffic

Deciding on a **technology**

Biometric Readers and WhatsApp Bots:



Biometric readers use biometric information for individuals which collect information and can allow access, and use information for investigation. With the advent of COVID 19, SMART phones have the ability to become biometric readers. We have solutions which we are piloting using WhatsApp bots which will allow university access as well as for the use of contact tracing or managing class sizes



Deciding on a **technology**



Smart Cameras:

SMART cameras features a wide range of smart functions, including; face detection, intrusion detection, line crossing detection and audio exception, benefitting users with great improvement on security efficiency, more importantly, with key events / objects being recorded for further forensic needs. These features, combined with smart tracking, which enables the camera to detect any progressively moving object and follow it within the camera's area of coverage without fault.

Deciding on a technology - The future of drone



Drone Technology with AI:

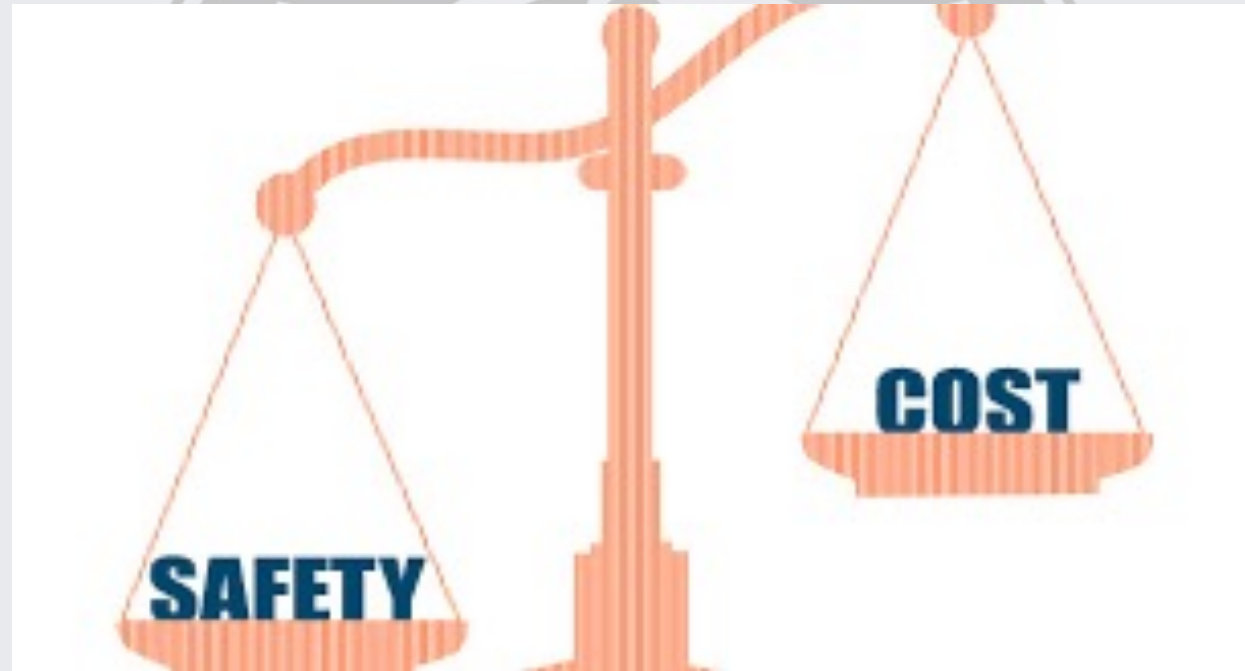
Smart drones can be deployed with AI which detects movements and can quickly alert security personnel. These will supplement physical guards

*Caution drones have to be operated by South African Civil Aviation Authority licenced pilots

Technology **and** People



Cost saving **or** improved safety



Contact **Us**

Name: Justin Kettle

Phone Number: 083 505
5210

Email:

justin@grayguardians.co.za

